

# Zambia National Malaria Control Programme: Enumeration Activities District Summary Report

District: **Kafue**  
Date of last enumeration **21-May-09**

	<i>2007</i>	<i>2008</i>	<i>2009</i>	<i>Total</i>
<b>Enumeration results: Demography</b>				
Households (HHs)	6,817		806	7,623
Structures enumerated	8,176		1,108	9,284
Structures per HH enumerated	1.2		1.4	
Sleeping spaces			2,029	2,029
Sleeping spaces per HH enumerated			2.5	
Houses with no respondents	810		104	914
Houses with no structure/room count	21		29	50
Percent of HHs enumerated (%)	0.3		3.6	
Total population	34,118		3,863	37,981
Children under age five			586	586
Average population per HH	5.0		4.8	
<b>Enumeration results: Mosquito nets</b>				
Mosquito nets reported	5,549		862	6,411
Mosquito nets per HH	0.8		1.1	
Mosquito nets per sleeping space			0.4	
Percent of HHs with at least 1 net (%)	46.3		55.4	
<b>Enumeration results: Indoor residual spraying (IRS)</b>				
Rooms enumerated	25,149		4,766	29,915
Rooms with plastered surfaces	13,747		3,137	16,884
Households sprayed < 12 months			280	280
Percent HHs sprayed < 12 months (%)			39.9	
Average numbers months ago HH sprayed			6.4	
<b>Enumeration results: Household received IEC materials</b>				
Percent HHs receiving IRS brochure (%)			16.0	
Percent HHs receiving ITN brochure (%)			14.7	
<b>Enumeration results: Community health worker (CHW) visits</b>				
CHW Visit			121	121
Percent HHs reporting visits by CHW (%)			17.2	

Figure 1: Household enumeration activities by mosquito net availability

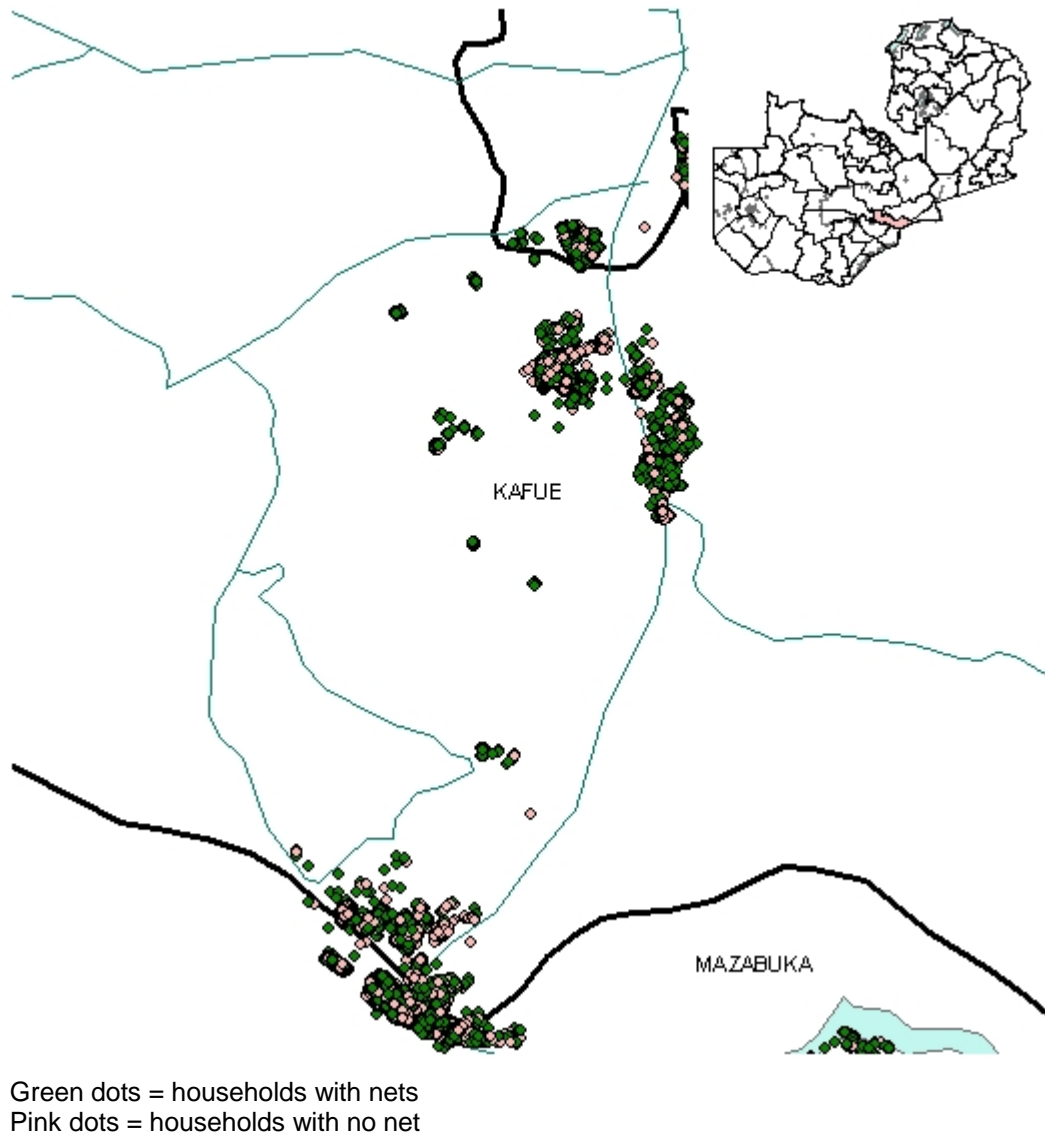
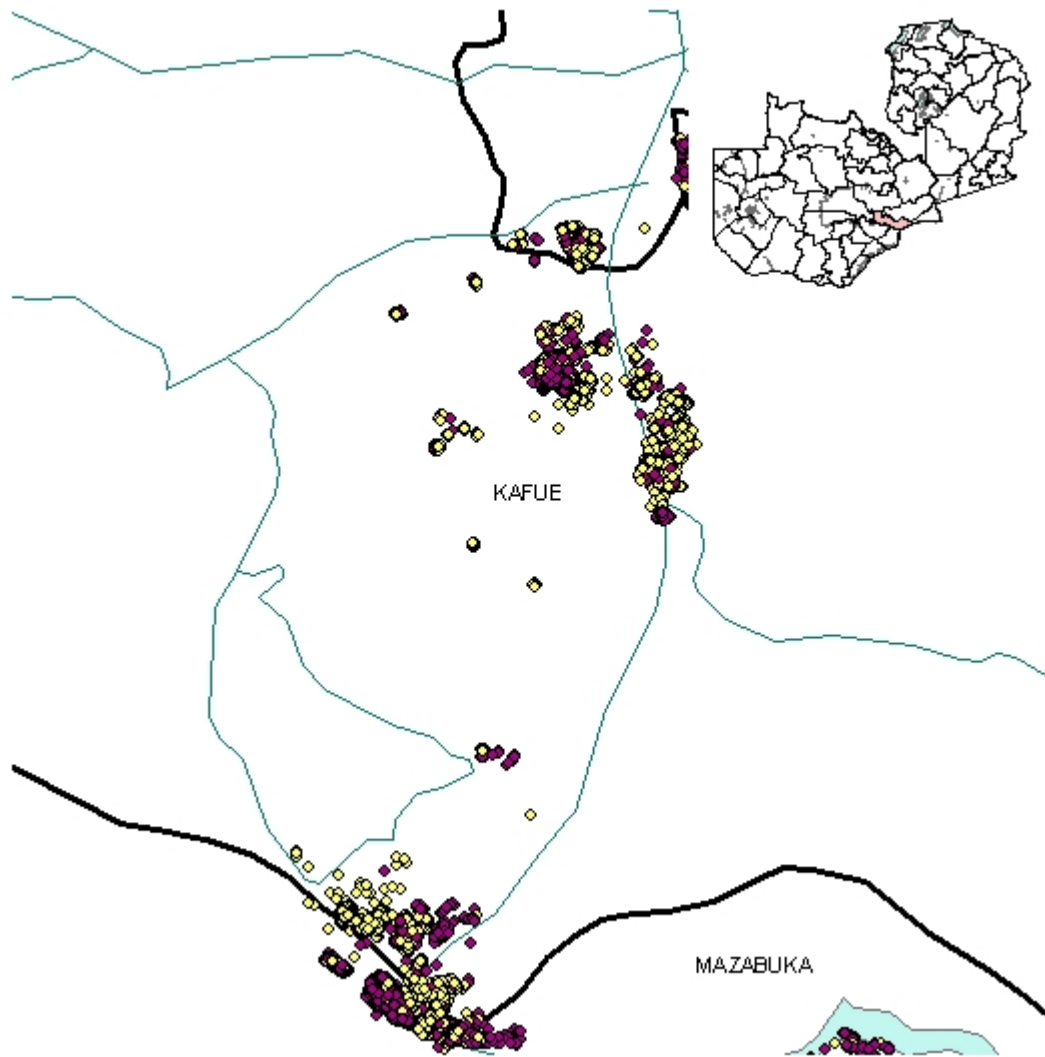
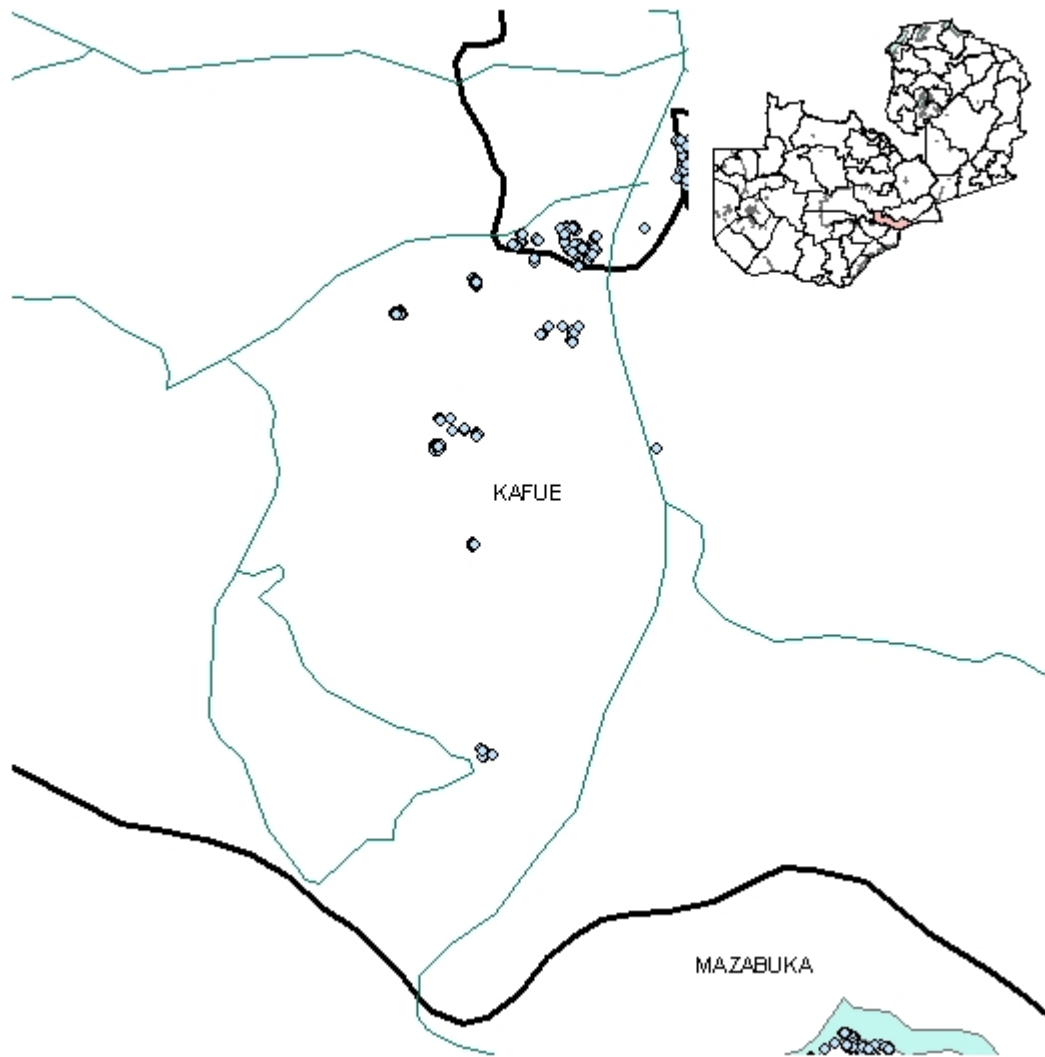


Figure 2: Household enumeration activities by plastered wall surfaces



Yellow dots = households with any plastered wall surfaces  
Purple dots = households with no plastered wall surfaces

Figure 3: Households enumeration reported sprayed in the previous 12 months



Blue dots = houses reported sprayed within the previous 12 months

## Indicator definitions

---

### *Enumeration results: Demography*

#### **Households (HHs)**

The total number of enumerated households.

#### **Structures enumerated**

The total number of structures reported for each household.

#### **Structures per HH enumerated**

The average number of structures enumerated per household.

#### **Sleeping spaces**

The total number of sleeping spaces reported by the household respondents.

#### **Sleeping spaces per HH enumerated**

The average number of sleeping spaces structures enumerated per household.

#### **Houses with no respondents**

The total number of households with no respondent or where no information on number of people living in the household was available.

#### **Houses with no structure/room count**

The total number of households with no information on number of structures or rooms available.

#### **Percent of HHs enumerated (%)**

The percentage of total number of households with no information on number of structures or rooms was available. The denominator is the total number of enumerated households.

#### **Total population**

The total population reported among households with a respondent.

#### **Children under age five**

The total number of children under five reported living in the household among households with a respondent.

#### **Average population per HH**

The average population per household among households with a respondent.

### *Enumeration results: Mosquito nets*

#### **Mosquito nets reported**

The total number of mosquito nets reported available in households with a respondent.

#### **Mosquito nets per HH**

The average number of mosquito nets per household among households with a respondent.

#### **Mosquito nets per sleeping space**

The average number of mosquito nets available per sleeping space among households with a respondent.

### **Percent of HHs with at least 1 net (%)**

The percentage of households with at least one mosquito net among households with a respondent.

#### *Enumeration results: Indoor residual spraying (IRS)*

##### **Rooms enumerated**

The total number of rooms reported for each household.

##### **Rooms with plastered surfaces**

The total number of rooms with plastered wall surfaces reported for each household.

##### **Households sprayed < 12 months**

The total number of households reported to have been sprayed within the past 12 months among households with a respondent.

##### **Percent HHs sprayed < 12 months (%)**

The percentage of households reported to have been sprayed within the past 12 months among households with a respondent. The denominator is the total number of households with a respondent.

##### **Average numbers months ago HH sprayed**

The average number of months ago the households were reported to have been sprayed among households with a respondent.

#### *Enumeration results: Household received IEC materials*

##### **Percent HHs receiving IRS brochure (%)**

The percentage of households reporting that an IRS brochure was received among households with a respondent. The denominator is the total number of households with a respondent.

##### **Percent HHs receiving ITN brochure (%)**

The percentage of households reporting that an ITN brochure was received among households with a respondent. The denominator is the total number of households with a respondent.

#### *Enumeration results: Community health worker (CHW) visits*

##### **CHW Visit**

Households reporting a CHW has ever visited their household

##### **Percent HHs reporting visits by CHW (%)**

The percentage of households reporting a CHW has ever visited their household. The denominator is the total number of households with a respondent.